

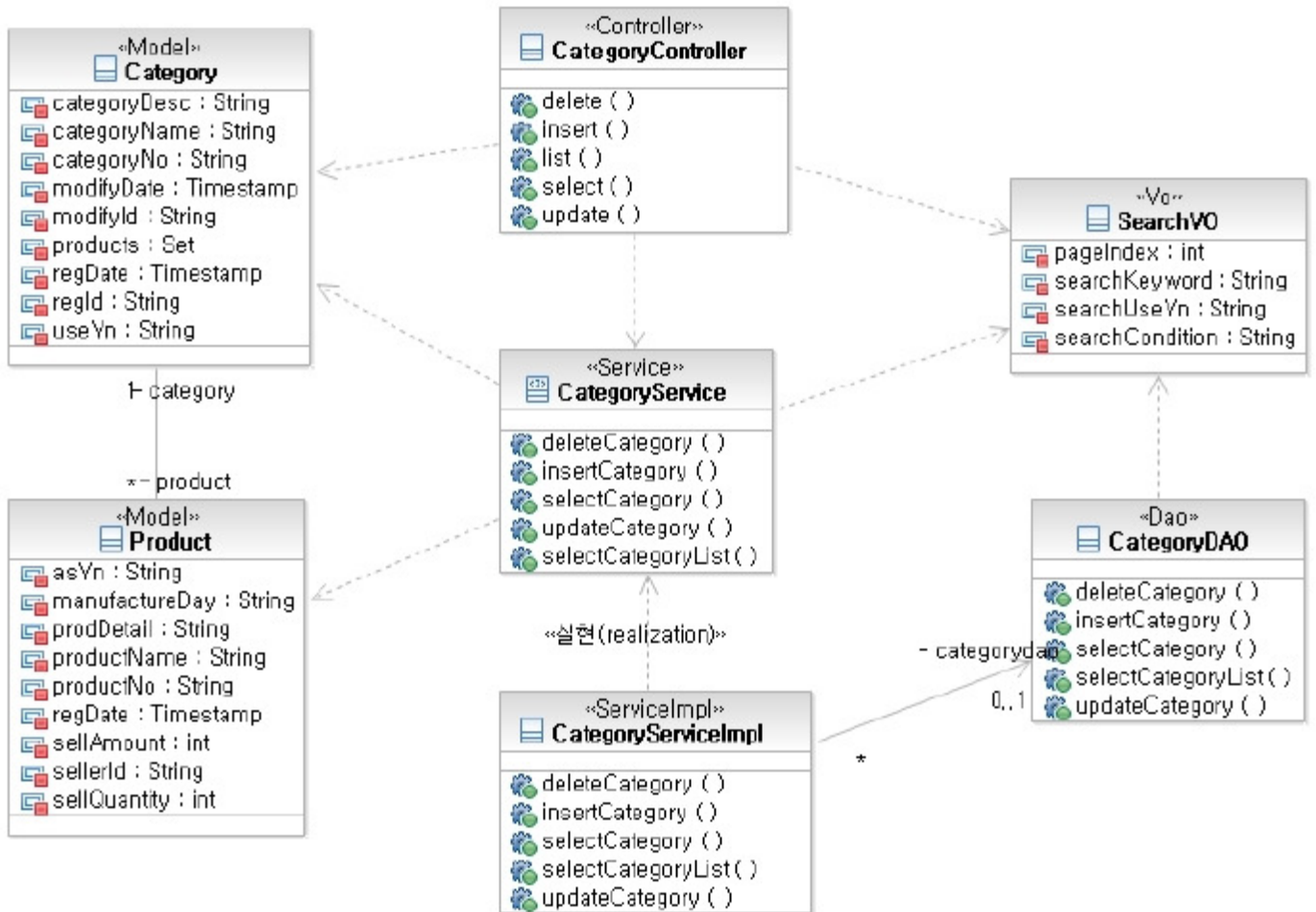
Auto-generation of source codes based on XMI files

Summary

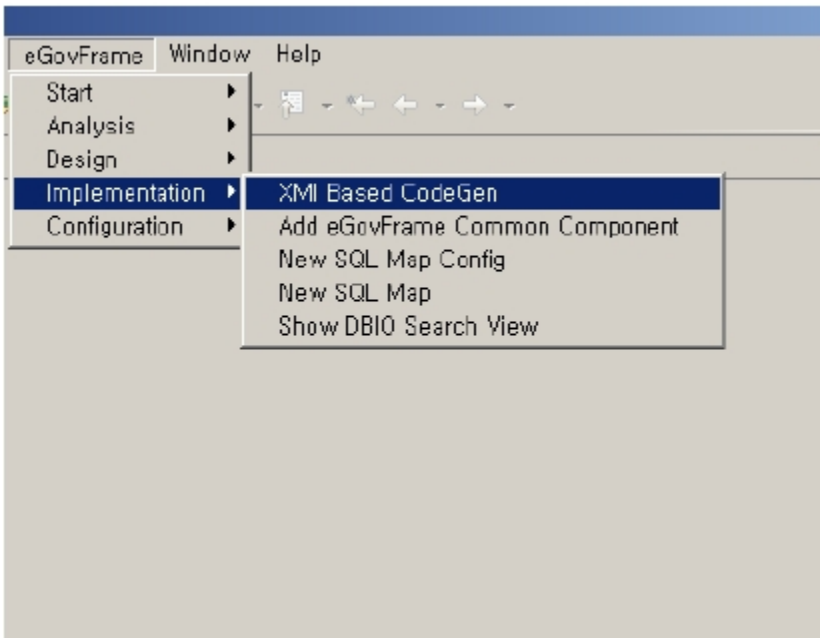
The eGovFrame's Code Gen provides XMI Code Generation feature that supports models created with other UML modeling tools (for UML 2.1 and XMI 2.1 versions).

Manual

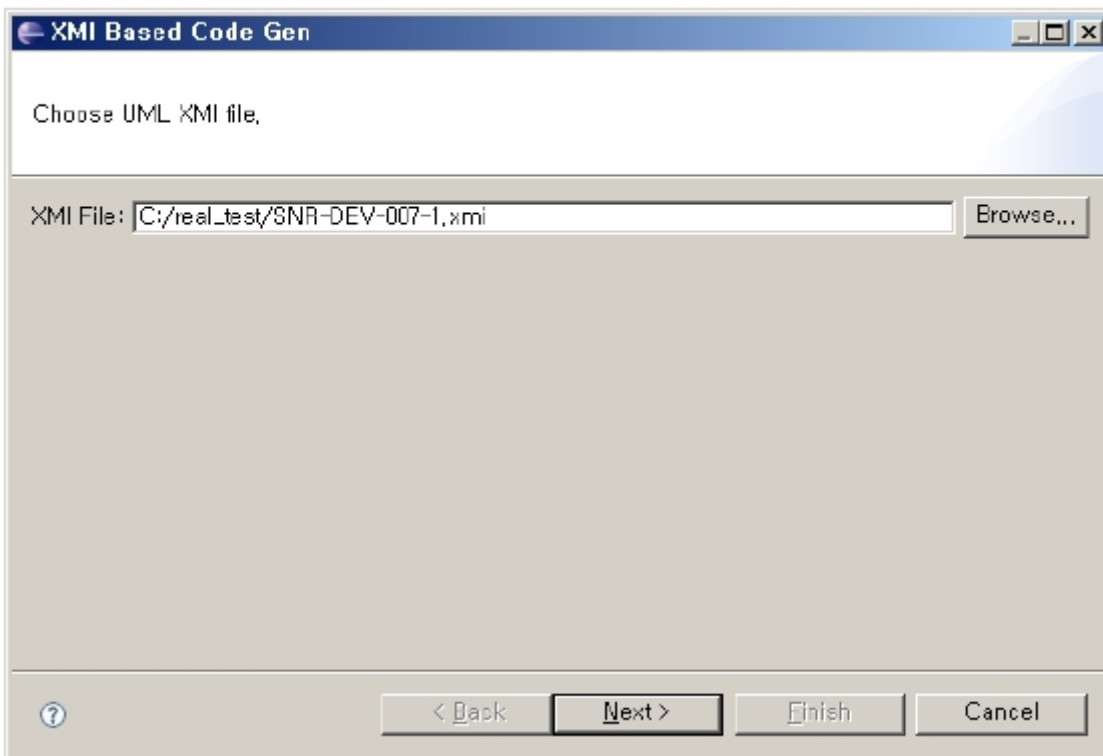
1. Export a class diagram from another UML modeling tool into an XMI file. (Only available UML 2.1 and XMI 2.1 versions)



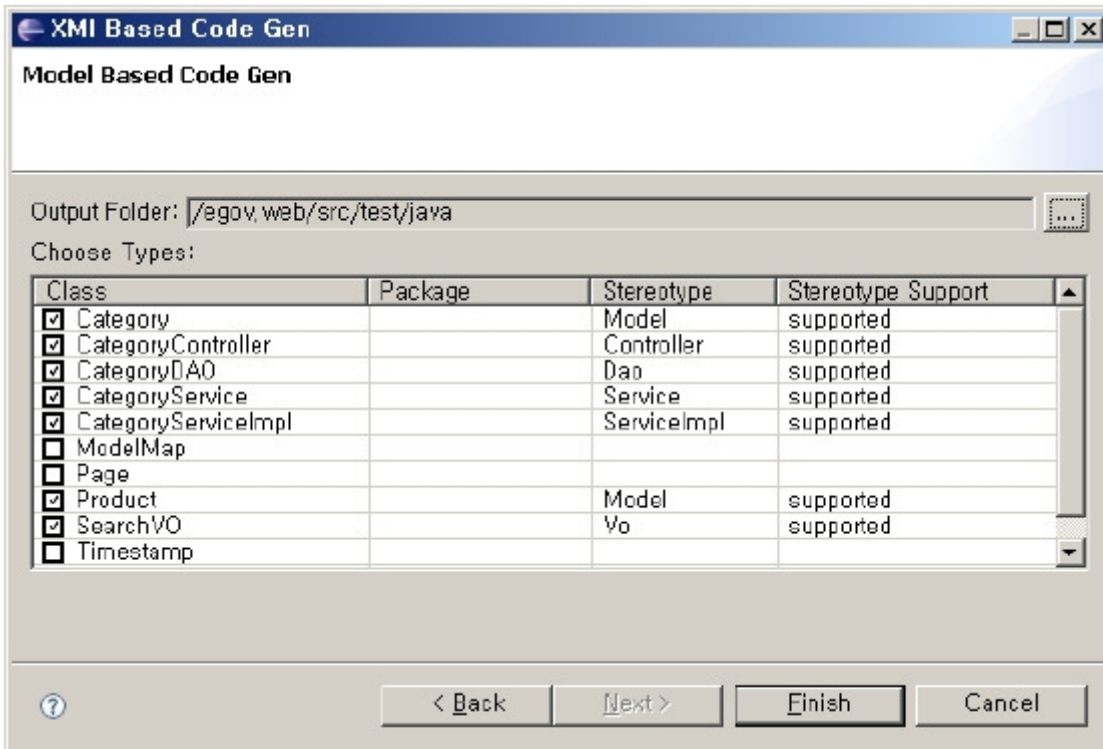
2. In the eGovFrame Perspective, choose eGovFrame > Implementation > XMI Based CodeGen from the menu.



3. Choose an XML file, and click Next.



4. Create a class model to auto-generate code, choose a destination folder, then click Finish.



5. Confirm the generated resource files.

